



Bonham Road, Brixton, SW2

1 bedroom flat to let

£365 Per Week

Furnished

Property Details

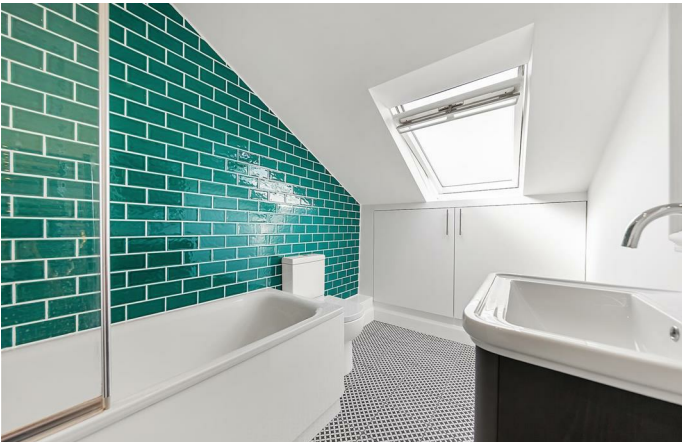
This great split level one bedroom top floor flat is in a quite residential location in Brixton with only a 11 minute walk to Brixton Station and 13 minutes to Clapham North. This property is on the top floor of this converted house, the interior has been finished to a high standard with hardwood floors and down lights. The open plan kitchen-reception room is a good size with ample room to dine, the modern kitchen has plenty of windows letting in plenty of light. The bedroom is down the stairs of this split level flat making this flat feel as homely as it looks.

This quiet and neighbourly street is tucked away in a sought-after pocket with the restaurants, supermarkets and bars of Acre Lane a short walk away. Within a ten-minute stroll is everything that Brixton has to offer, from music venues and the extremely popular Brixton Village to large brand shops and cracking transport links, first stop on the Victoria tube line. Vibrant and diverse Clapham High Street is a similar distance in the other direction, offering great nightlife with the cafes and boutique shops within Abbeville Village, Venn Street and Clapham Old Town all close by. Living here you will benefit from both the Northern Line (Clapham North, Clapham Common and Clapham South tube stations) and the Victoria Line (Brixton tube station). This property has the advantage of two wonderful green open spaces within walking distance; Clapham Common and Brockwell Park with its iconic 1930s Lido.

Features

- Light and airy
- Split level
- Open plan
- Wooden flooring
- Short walk to Brixton Station
- 1 double bedroom

Council tax band C **EPC rating C (69)**



Bonham Road, Brixton, SW2



1 Bed Flat

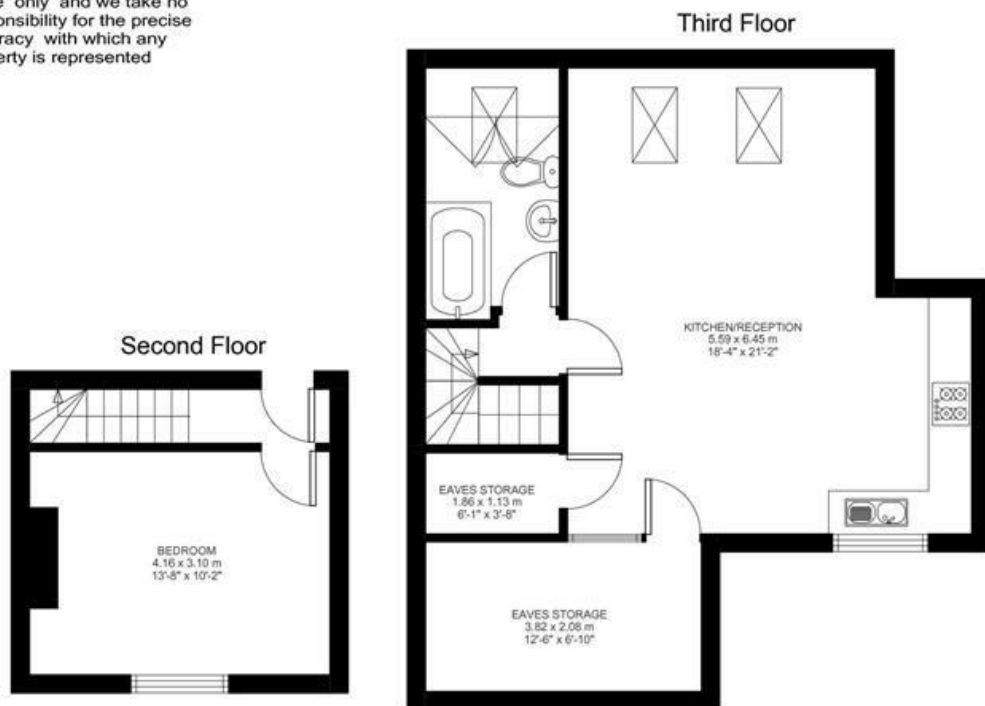
Approx internal area:
(EXCLUDING EAVES STORAGE)

634 sqft 59 sqm

(Incl Eaves Storage 69m² 743ft²)

While we do try our very best, floor plans are produced as a guide only and we take no responsibility for the precise accuracy with which any property is represented

Bonham Road



Bonham Road, Brixton, SW2

